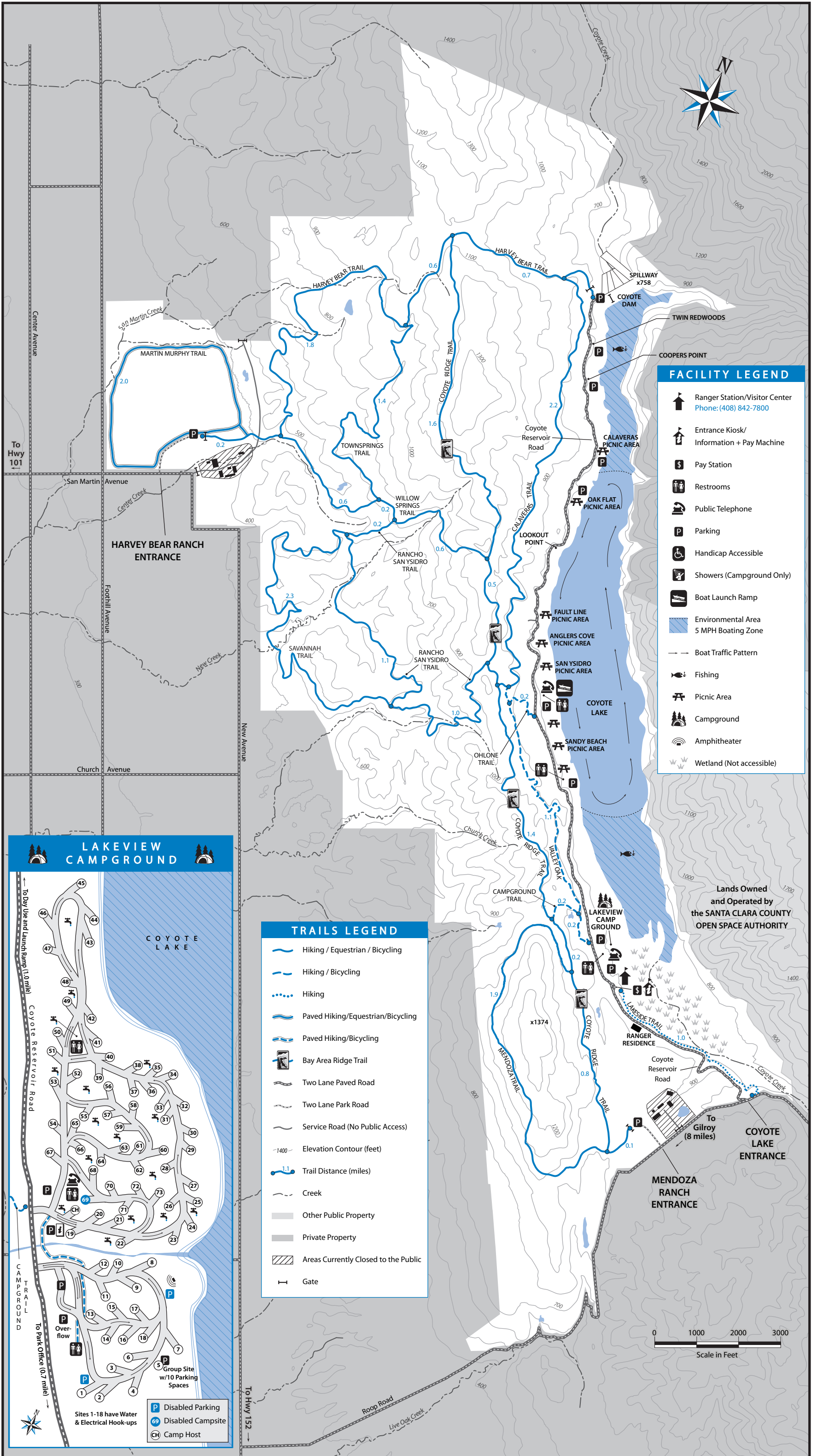


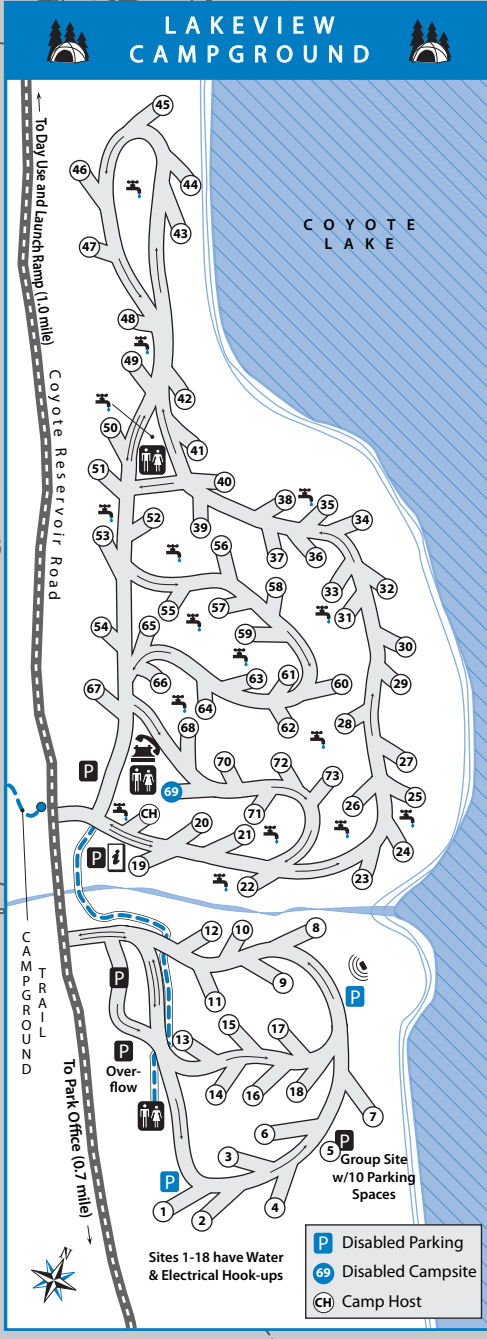


SANTA CLARA COUNTY PARKS

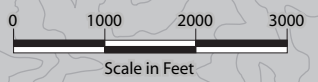
# Coyote Lake - Harvey Bear Ranch County Park



FACILITY LEGEND	
	Ranger Station/Visitor Center Phone: (408) 842-7800
	Entrance Kiosk/ Information + Pay Machine
	Pay Station
	Restrooms
	Public Telephone
	Parking
	Handicap Accessible
	Showers (Campground Only)
	Boat Launch Ramp
	Environmental Area 5 MPH Boating Zone
	Boat Traffic Pattern
	Fishing
	Picnic Area
	Campground
	Amphitheater
	Wetland (Not accessible)



TRAILS LEGEND	
	Hiking / Equestrian / Bicycling
	Hiking / Bicycling
	Hiking
	Paved Hiking/Equestrian/Bicycling
	Paved Hiking/Bicycling
	Bay Area Ridge Trail
	Two Lane Paved Road
	Two Lane Park Road
	Service Road (No Public Access)
	Elevation Contour (feet)
	Trail Distance (miles)
	Creek
	Other Public Property
	Private Property
	Areas Currently Closed to the Public
	Gate



Lands Owned and Operated by the SANTA CLARA COUNTY OPEN SPACE AUTHORITY